

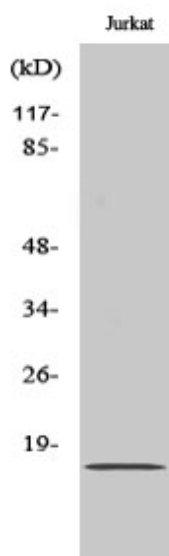


# BUD31 Polyclonal Antibody

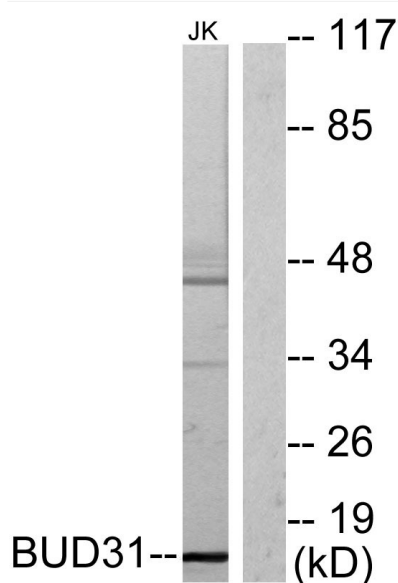
|                                  |   |
|----------------------------------|---|
| <b>Catalog No</b>                | YP-Ab-01578   |
| <b>Isotype</b>                   | IgG   |
| <b>Reactivity</b>                | Human;Mouse;Rat   |
| <b>Applications</b>              | WB;IHC;IF;ELISA   |
| <b>Gene Name</b>                 | BUD31   |
| <b>Protein Name</b>              | Protein BUD31 homolog   |
| <b>Immunogen</b>                 | The antiserum was produced against synthesized peptide derived from human BUD31. AA range:10-59                                   |
| <b>Specificity</b>               | BUD31 Polyclonal Antibody detects endogenous levels of BUD31 protein.   |
| <b>Formulation</b>               | Liquid in PBS containing 50% glycerol, 0.5% BSA and 0.02% sodium azide.   |
| <b>Source</b>                    | Polyclonal, Rabbit,IgG  |
| <b>Purification</b>              | The antibody was affinity-purified from rabbit antiserum by affinity-chromatography using epitope-specific immunogen.             |
| <b>Dilution</b>                  | WB: 1/500 - 1/2000. IHC: 1/100 - 1/300. ELISA: 1/20000.. IF 1:50-200  |
| <b>Concentration</b>             | 1 mg/ml   |
| <b>Purity</b>                    | ≥90%  |
| <b>Storage Stability</b>         | -20°C/1 year  |
| <b>Synonyms</b>                  | BUD31; EDG2; Protein BUD31 homolog; Protein EDG-2; Protein G10 homolog  |
| <b>Observed Band</b>             | 17kD  |
| <b>Cell Pathway</b>              | Nucleus . Detected in chromatin at the promoter of AR target genes. .   |
| <b>Tissue Specificity</b>        | Detected in epithelial and stromal cells in benign prostate hyperplasia tissue (at protein level).                                |
| <b>Function</b>                  | similarity:Belongs to the BUD31 (G10) family.,  |
| <b>Background</b>                | similarity:Belongs to the BUD31 (G10) family.,  |
| <b>matters needing attention</b> | Avoid repeated freezing and thawing!  |
| <b>Usage suggestions</b>         | This product can be used in immunological reaction related experiments. For more information, please consult technical personnel. |



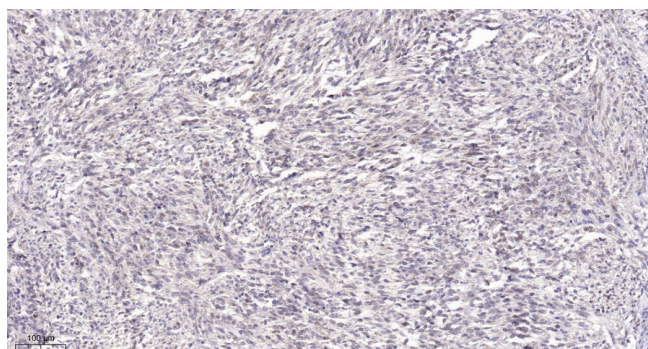
## Products Images



Western Blot analysis of various cells using BUD31 Polyclonal Antibody cells nucleus extracted by Minute TM Cytoplasmic and Nuclear Fractionation kit (SC-003, Inventbiotech, MN, USA).



Western blot analysis of lysates from Jurkat cells, using BUD31 Antibody. The lane on the right is blocked with the synthesized peptide.



Immunohistochemical analysis of paraffin-embedded human Small intestinal stromal tumor. 1, Tris-EDTA, pH9.0 was used for antigen retrieval. 2 Antibody was diluted at 1:200(4° overnight. 3, Secondary antibody was diluted at 1:200(room temperature, 45min).